



Welcome to the:
Mid-State Beekeeper's
Beginner Beekeeper Class

February 2023



ADMIN NOTES

- Cell Phones
- Restrooms
- Breaks
- Study Guide
- Presentations
- Next Class

February 2023



+

•



YOUR QUESTIONS

o





MY QUESTIONS





Selecting an Apiary Site

February 2023



Where can I keep bees?

- Bees are very adaptable
- Urban / suburban / rural sites
 - Roof top
 - Front porch
 - Desert
 - Backyard
 - Field

Safety

- Place hives where they are not a threat to people or animals
- Place hives near a fence or hedge to raise flight lines.
- Orient hives away from neighbors, sidewalks, etc.



Safety

- Avoid areas that may be exposed to pesticides.
- Avoid areas where the hives can be vandalized.

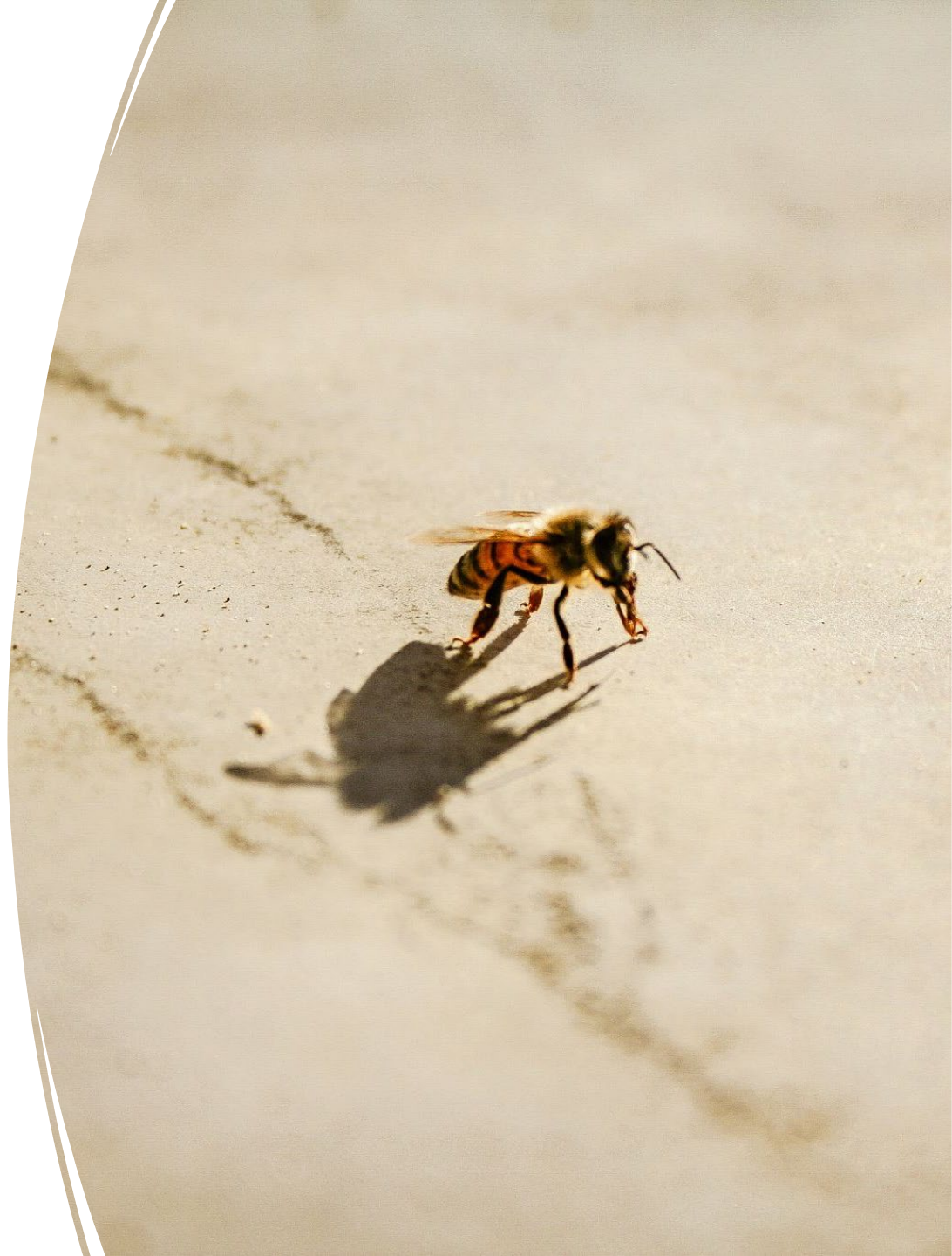


Convenience

- **Beekeeping involves lots of stuff, so make it easy to get to your hives.**
 - **Hive bodies / supers**
(hopefully heavily laden with honey!)
 - **Equipment / feeders / sugar water**
- **You will learn more about your bees if they are nearby.**

Access to food and water

- Bees will fly 2-3 miles to get food and water
- Water supply for rural, suburban and urban areas can be quite different (drainage ditches, cow patties, bird baths). A good supply should be within 1/4 mile.
 - They seem to prefer dirty, mineral rich sources.



Exposure to sun and wind

Southeast facing sites are good

Morning sun is recommended to get bees foraging early in the day. Full day sun is best for Small Hive Beetle control

Avoid low and high places – wind, humidity, floods, etc

Pests Predators Pesticides

- Bears – consider installing electric fencing to protect your colonies in rural areas
- Skunks and other varmints – locating colonies 18” above the ground will minimize risk
- Man – beware that vandalism and/or theft has become more of a problem
- When locating bees in rural farming areas try to locate bees where they will not be exposed to pesticides applied by farming neighbors. Communicate with your local farmers. They may appreciate the pollination your bees provide and may work with you to time applications so that you can work together to protect your bees. For direct nearby applications, removing bees is the best protection. If removal is not possible, closing hives and covering with wet sheets may reduce contamination.



How many hives in an apiary?

- A minimum of two hives per location is highly recommended.
 - **Why?** Provides ability to transfer frames of eggs, honey, etc. between hives if one of your hives is weak.
- How many hives per apiary?
 - The usual recommendation is a maximum of 20-25 hives at one location in South Carolina. This number can vary depending on the amount of bee forage.
- What determines the optimum amount of hives for you?
 - The amount of work you want to do (management, extracting, etc.) as well as available food sources.





McComb, John T.





2010/07/24 17:5

